

TAMRON

Focus on the Future



Focal Length: 500mm Exposure: F6.7 1/250sec ISO: 1600

150-500_{mm} F/5-6.7 Di III VC VXD

for Sony full-frame mirrorless

Unprecedented ultra-telephoto 500mm zoom sets your creative vision free

Dramatically capture distant subjects.

VC and fast AF ensure you'll never miss a magnificent moment.

Zoom in on the image of your dreams

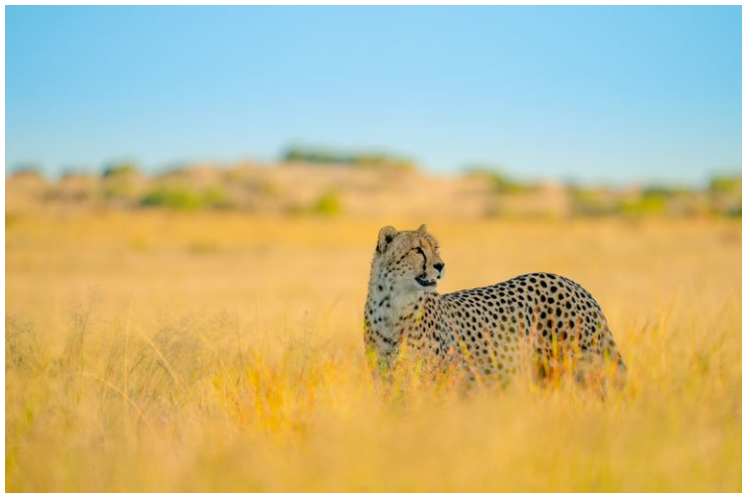


150-500mm F/5-6.7 Di III VC VXD (Model A057)

For Sony E-mount Di III: For mirrorless interchangeable-lens cameras

Ultra-telephoto zoom with comfortable, intuitive operation

Uncompromised pursuit of high optical performance in a compact body



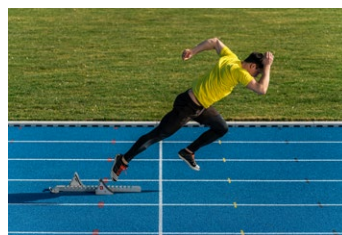
Focal Length: 500mm Exposure: F6.7 1/1000sec ISO: 400

The 150-500mm F/5-6.7 Di III VC VXD (Model A057) features a very compact design, high image quality. This amazing zoom lens achieves a 500mm focal length while retaining a compact size, with a length of just 209.6mm (8.3 in) and a maximum diameter of 93mm, and will be Tamron's first model for Sony E-mount full-frame mirrorless cameras equipped with VC (Vibration Compensation), so it's easy to carry and comfortable to shoot handheld. The design places major emphasis on image quality. The optical construction features 25 elements in 16 groups and utilizes special lens elements and hybrid aspherical lens elements to control chromatic aberrations. BBAR-G2¹ Coating is used to suppress ghosting and flare, which could otherwise occur under backlit conditions. Additionally, the lens has a MOD (Minimum Object Distance) of 0.6m (23.6 in) at the 150mm end, so you can freely enjoy telephoto macro shooting of subjects at closeup distances. The 150-500mm F5-6.7 is a highly versatile lens that lets you capture a wide array of subjects ranging from landscapes and birds to sports and wildlife. You'll be thoroughly amazed when you experience the powerful and unique world of ultra-telephoto lenses for yourself.



Focal Length: 150mm Exposure: F8 1/100sec ISO: 400

High-speed, high-precision AF means you'll never miss a photo opportunity



Focal Length: 150mm Exposure: F5.6 1/2000sec ISO: 500

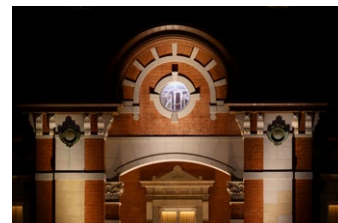


VXD(Voice-coil eXtreme-torque Drive): linear motor focus mechanism

The 150-500mm F5-6.7 zoom's AF drive system is equipped with the VXD² linear motor focus mechanism. The VXD mechanism delivers extreme high-speed and high-precision movement and ensures exceptionally responsive performance when photographing subjects such as wild birds, sports, vehicles, and wildlife in general. The linear motor also suppresses drive noise and vibrations during focusing, making it ideal for shooting both still photos and video in environments that demand quietness.

VC image stabilization facilitates shooting handheld at the ultra-telephoto position

When shooting in the ultra-telephoto range, even the smallest vibrations can lead to loss of image clarity. The 150-500mm F5-6.7 is equipped with VC functionality to support sharp images despite unavoidable camera shake. VC delivers powerful support for handheld shooting of scenes with low light levels, such as at evening and indoor, without the use of a tripod. The lens also features a VC mode selection switch with three modes including a dedicated panning mode, thereby enabling selection of the ideal VC mode to match shooting conditions and preferences.



Focal Length: 500mm Exposure: F6.7 1/30sec ISO: 3200

Additional features for greater convenience

- Arca-Swiss compatible tripod mount with strap attachment holes included
- FLEX ZOOM LOCK mechanism
- New switch design for improved operability
- Lens hood with flexible, protective front portion
- Moisture-Resistant Construction
- Fluorine Coating

Built with Mirrorless in Mind

TAMRON's new 150-500mm F5-6.7 is compatible with many of the advanced features that are specific to mirrorless cameras. These include:

- Fast Hybrid AF
- Eye AF
- Direct Manual Focus (DMF)
- In-camera lens correction (shading, chromatic aberration, distortion)
- Camera-based lens unit firmware updates

* Features vary by camera. Please consult your camera's instruction manual for details.

1 Broad-Band Anti-Reflection Generation 2 2 Voice-coil eXtreme-torque Drive

150-500mm F/5-6.7 Di III VC VXD (Model A057)

Model	A057	MOD.....	0.6m (23.6 in) (WIDE) / 1.8m (70.9 in) (TELE)	Weight.....	1,725g (60.8 oz) (without tripod mount included) / tripod mount 155g (5.5 oz)
Focal Length.....	150-500mm	Max. Mag. Ratio	1:3.1 (WIDE) / 1:3.7 (TELE)	Aperture Blades	7 (circular diaphragm)**
Max. Aperture.....	F5-6.7	Filter Size	φ82mm	Min. Aperture	F22-32
Angle of View (diagonal).....	16°25' - 4°57' (<for full-frame mirrorless format>)	Max. Diameter	φ93mm	Standard Accessories.....	Round-shaped hood, Lens caps, Tripod mount
Optical Construction.....	25 elements in 16 groups	Length*	209.6mm (8.3 in)	Compatible Mounts	Sony E-mount

* Length is the distance from the front tip of the lens to the lens mount face.

** The circular diaphragm stays almost perfectly circular up to two stops down from maximum aperture.

Specifications, appearance, functionality, etc. are subject to change without prior notice.

This product is developed, manufactured and sold based on the specifications of E-mount which was disclosed by Sony Corporation under the license agreement with Sony Corporation.

Caution: Please read the instruction manual carefully before using the lens.

A057-EN-111-1-2103

TAMRON CO., LTD.

1385, Hasunuma, Minuma-ku,
Saitama-shi, Saitama 337-8556 JAPAN
Tel. +81-48-684-9339
Fax. +81-48-684-9349



Management on Quality and Environment

Tamron is certified with international standards: ISO 9001 for quality and ISO14001 for environmental management at its headquarters, domestic sales offices, China plant as well as production facilities in Aomori, Japan, and is fully committed to striving for continued and sustainable improvement at all levels and facets of its business operations.



www.tamron.com

Note: Information valid as of March, 2021. Information in this publication is subject to change at any time without prior notice.